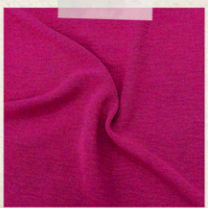


CATÁLOGO

*Tecidos para vestuário*



COR FUSION



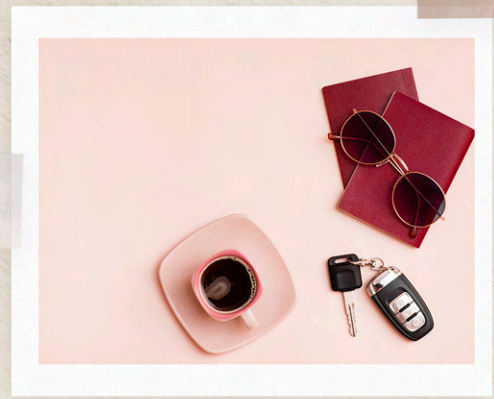
COR BEGE



# air flow

COMPOSIÇÃO: 100% POLIÉSTER

- LAVAGEM ATÉ 40° C. PROCESSO SURVE
- NÃO UTILIZAR ALVEJANTE OU CLAREADOR
- NÃO UTILIZAR SECADORA DE TAMBOR
- SECAGEM NA VERTICAL
- TEMPERATURA MÁXIMA 150° C
- NÃO LIMPAR A SECO



BRANCO	OFF WHITE	AREIA	BEGE	PRETO
MANGA	CURRY	QUANTICO	RED	FÊNIX
CAKE	CONFETTI	PIERROT	FUSION	FROST
PEGASUS	AZUL BIC	KITSH	APOTEOSE	
SCUBA BLUE	GRAVIOLA			





COR GRAVIOLA



COR AMARULA



# air flow linen



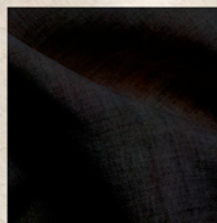
COMPOSIÇÃO: 100% POLIÉSTER



BRANCO



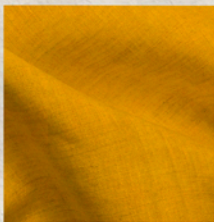
OFF WHITE



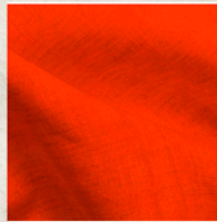
PRETO



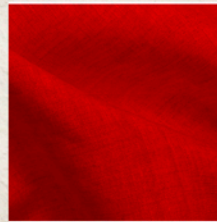
AMARULA



CURRY



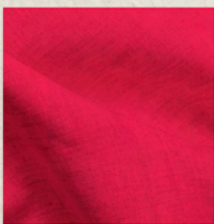
QUANTICO



RED



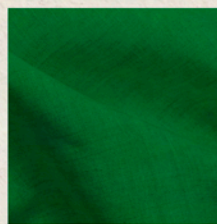
CONFETTI



PEACOCK



KITSCH



GRAVIOLA



FROST



CELESTE



ORBITA



LAVAGEM ATÉ 40° C  
PROCESSO SUAVE



NÃO UTILIZAR ALVEJANTE OU CLAREADOR



NÃO UTILIZAR SECADORA DE TAMBOR



SECAGEM NA VERTICAL



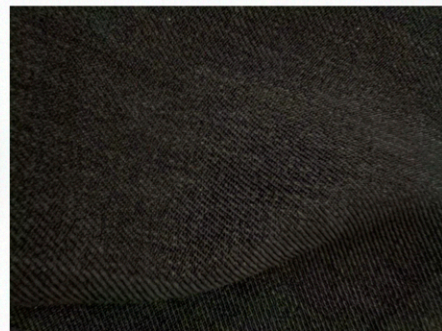
TEMPERATURA MÁXIMA 150° C



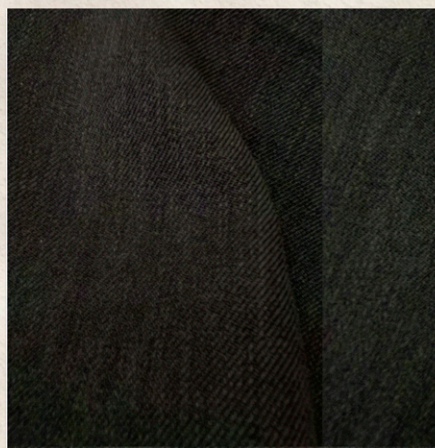
NÃO LIMPAR A SECO

ROZAC

# alfaiataria twill



COMPOSIÇÃO: 100% POLIÉSTER



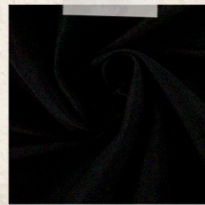
PRETO

- LAVAGEM ATÉ 40° C. PROCESSO SUIVE
- NÃO UTILIZAR ALVEJANTE OU CLAREADOR
- NÃO UTILIZAR SECADORA DE TAMBOR
- SECAGEM NA VERTICAL
- TEMPERATURA MÁXIMA 110° C.
- NÃO LIMPAR A SECO

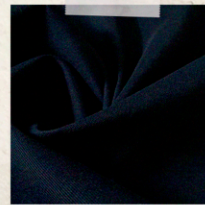


ROZAC

# bengaline



PRETO

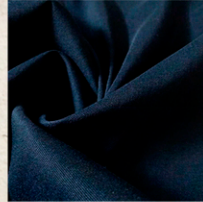


BLUE BLACK

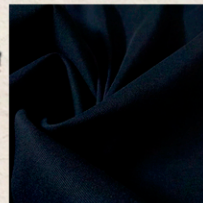


**COMPOSIÇÃO:**  
74% VISCOSE, 22% POLIAMIDA & 4% ELASTANO

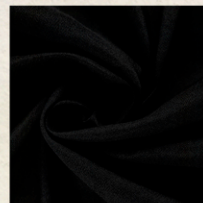
- LAVAGEM ATÉ 40°C PROCESSO SUAVE
- NÃO UTILIZAR ALVEJANTE OU CLAREADOR
- NÃO UTILIZAR SECADORA DE TAMBOR
- SECAGEM NA VERTICAL
- TEMPERATURA MÁXIMA 150°C
- NÃO LIMPAR A SECO



JEANS



BLUE BLACK



PRETO



# camisaria

80/20 mescla



COR COBALTO



COR BEGE



COMPOSIÇÃO: 80% POLIÉSTER & 20% ALGODÃO

- LAVAGEM ATÉ 40° C. PROCESSO SLIME
- NÃO UTILIZAR ALBEMIANTE OU CLAREADOR
- NÃO UTILIZAR BECADORA DE TAMBOR
- SEQUEM NA VERTICAL
- TEMPERATURA MÁXIMA 150° C
- NÃO LIMPAR A SECO



BEGE



CINZA



SMOKE



PACÍFICO



COBALTO



DENIM



LINHO



OLIVA

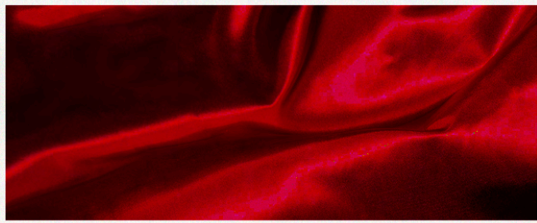


AZUL CLARO



AZUL





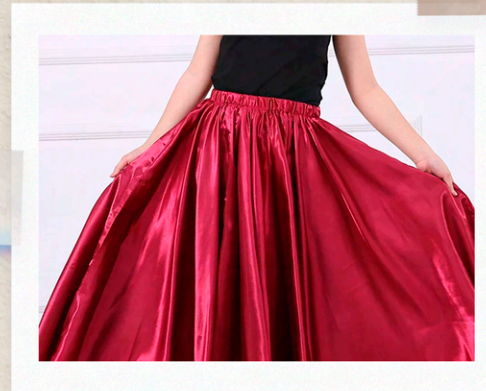
VERMELHO



PRETO



# cetim douchese

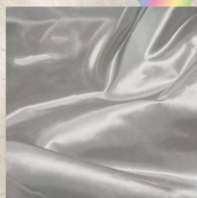


COMPOSIÇÃO: 100% POLIÉSTER

- LAVAGEM ATÉ 40° C. PROCESSO SUAVE
- NÃO UTILIZAR ALBEJANTE OU CLAREADOR
- NÃO UTILIZAR SECADORA DE TAMBOR
- SECAGEM NA VERTICAL
- TEMPERATURA MÁXIMA 150° C
- NÃO LIMPAR A SECO



BRANCO



PRATA



BEGE



LINHO



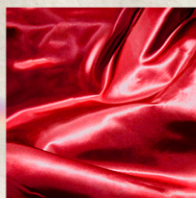
DOURADO



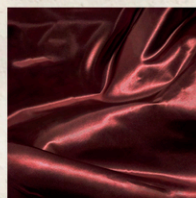
OURO



LARANJA



VERMELHO



VINHO



ROSA CLARO



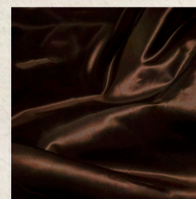
PINK



CHICLETE



LILÁS



TABACO



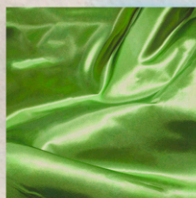
TURQUESA



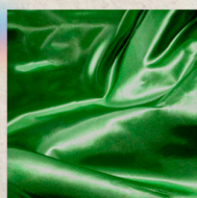
ROYAL



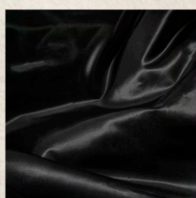
TIFANNY



PISTACHE



BANDEIRA

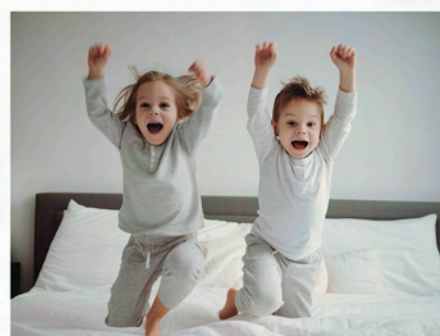


PRETO



# coral fleece

1.60 liso 200



TWO SIDE - COMPOSIÇÃO: 100% POLIÉSTER

- LAVAGEM ATÉ 40°C PROCESSO NORMAL
- NÃO UTILIZAR ALBISANTE OU CLAREADOR
- NÃO UTILIZAR SECADORA DE TAMBOR
- SECAGEM NA VERTICAL
- NÃO PASSAR
- NÃO LIMPAR A SECO



CINZA



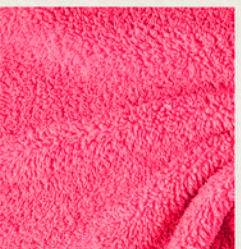
BEGE



ROSA BEBÊ



ROSÊ



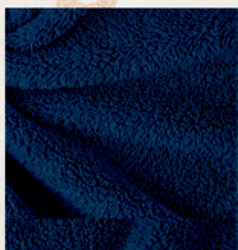
CHICLETE



VERDE ÁGUA



AZUL BEBÊ



MARINHO





# coral fleece

1.60 estampado 200

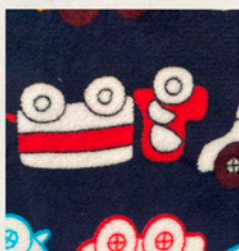


TWO SIDE - COMPOSIÇÃO: 100% POLIÉSTER

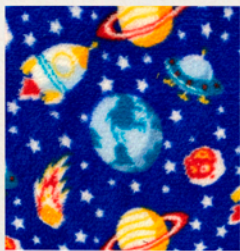
-  LAVAGEM ATÉ 40°C PROCESSO NORMAL
-  NÃO UTILIZAR ALBISANTE OU CLAREADOR
-  NÃO UTILIZAR SECADOR DE TAMBOR
-  SECAGEM NA VERTICAL
-  NÃO PASSAR
-  NÃO LIMPAR A SECO



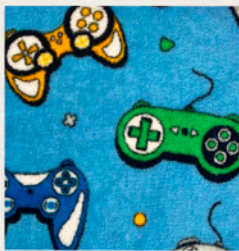
100



101



102



103



104



105



106



107



108



109



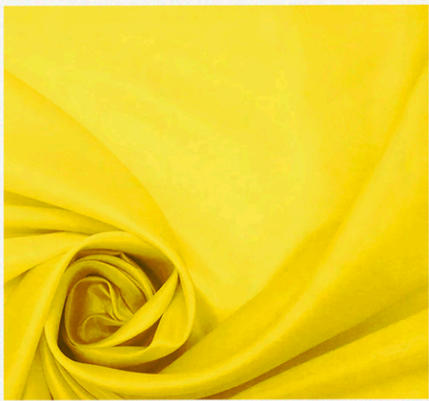
# failett



LARANJA NEON



AMARELO



COMPOSIÇÃO: 100% POLIÉSTER

- LAVAGEM ATÉ 40°C. PROCESSO NORMAL
- NÃO UTILIZAR ALBISANTE OU CLAREADOR
- NÃO UTILIZAR SECA-ROPA DE TAMBOR
- SECAGEM NA VERTICAL
- TEMPERATURA MÁXIMA 110° C
- NÃO LIMPAR A SECO
- LIMPEZA ÚMIDA



BRANCO



MARFIM



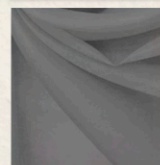
PELE



KAKI CLARO



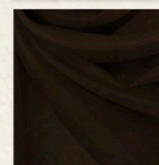
FENDI



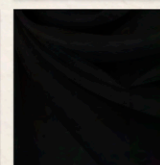
CINZA



CHUMBO



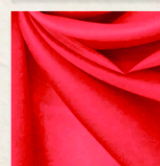
MARROM



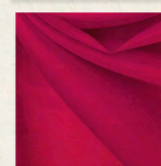
PRETO



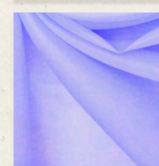
ROSA BEBÊ



PINK NEON



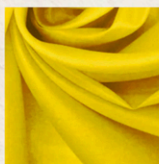
PINK



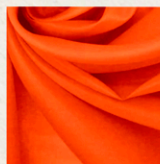
LILÁS



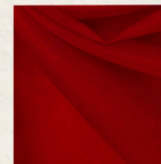
PURPLE



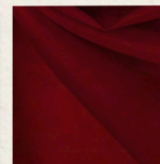
AMARELO



LARANJA NEON



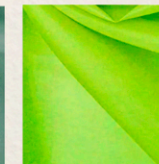
VERMELHO



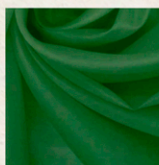
VINHO



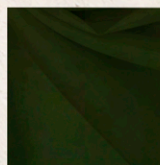
VERDE ÁGUA



VERDE NEON



BANDEIRA



MUSGO



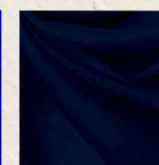
TIFFANY



TURQUESA



ROYAL



MARINHO



# gabardine



MARINHO



KAKI



COMPOSIÇÃO: 100% POLIÉSTER



BRANCO



SAFARI



KAKI



GRAFITE



PRETO



MILITAR



GREY



MARINHO



LAVAGEM ATÉ 40° C  
PROCESSO SUAVE



NÃO UTILIZAR ALVEJANTE OU CLAREADOR



NÃO UTILIZAR SECADORA DE TAMBOR



SECAGEM NA VERTICAL

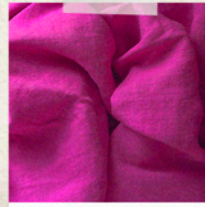


TEMPERATURA MÁXIMA 150° C

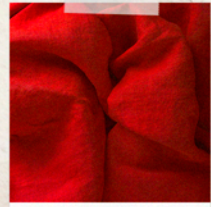


NÃO LIMPAR A SECO

# marant



COR PEACOCK



COR RED



COMPOSIÇÃO: 92% VISCOSE & 8% POLIÉSTER



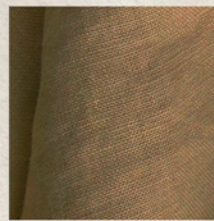
BRANCO



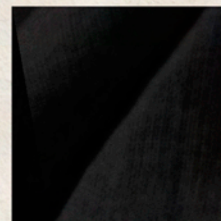
OFF WHITE



AMARULA



AMÊNDOA



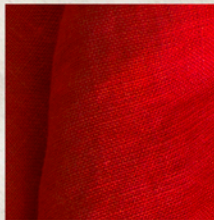
PRETO



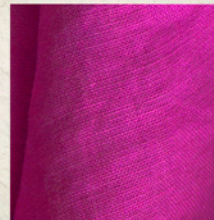
CURRY



PEACH



RED



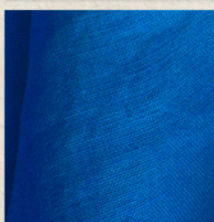
PEACOCK



VINHO



FROST



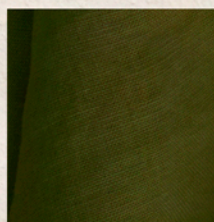
CELESTE



AFETO



SCUBA BLUE



OLIVA



LAVAGEM ATÉ 40° C  
PROCESSO SUAVE



NÃO UTILIZAR  
ALVEJANTE OU  
CLAREADOR



NÃO UTILIZAR  
SECADORA DE  
TAMBOR



SECAGEM NA  
VERTICAL



TEMPERATURA  
MÁXIMA 150° C

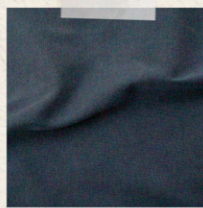


NÃO LIMPAR A SECO

ROZAC

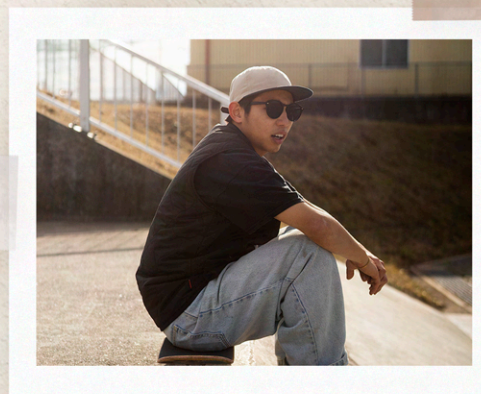
# micro fibra cargo

COMPOSIÇÃO: 80% POLIÉSTER & 20% POLIAMIDA



COR SELVA

COR GELO



BRANCO



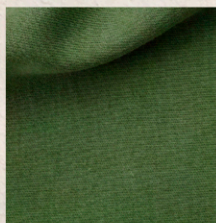
PRETO



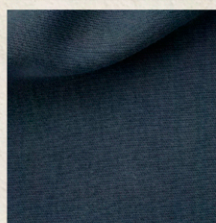
CREME BRULEE



GELO



SELVA



AZUL ECLIPSE



LAVAGEM ATÉ 40° C PROCESSO NORMAL

NÃO UTILIZAR ALVEJANTE OU CLAREADOR

UTILIZAR TEMPERATURA MÍNIMA

TEMPERATURA MÁXIMA 150° C

NÃO LIMPAR A SECO



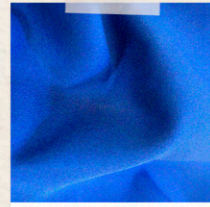
ROZAC

# microfibra

## 1,60 lisa



BABY BLUE



ROYAL



COMPOSIÇÃO: 100% POLIÉSTER



LAVAGEM ATÉ  
40° C  
PROCESSO  
NORMAL



NÃO UTILIZAR  
ALVEJANTE OU  
CLAREADOR



UTILIZAR  
TEMPERATURA  
MÍNIMA



TEMPERATURA  
MÁXIMA 150° C



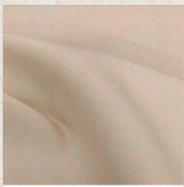
NÃO LIMPAR A SECO



BRANCO



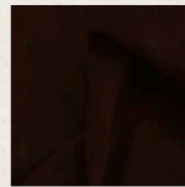
ICE



CHINO



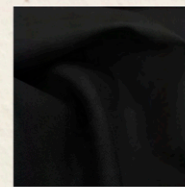
KAKI



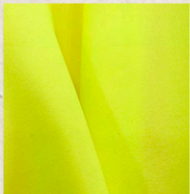
TABACO



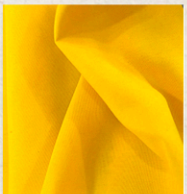
CINZA CLARO



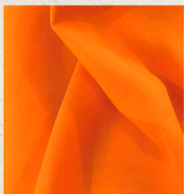
PRETO



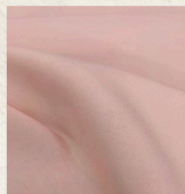
AMARELO FLOUR



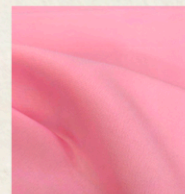
AMARELO



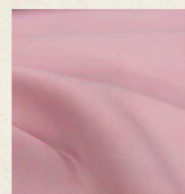
LARANJA FLOUR



NUDE



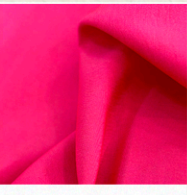
ROSA CLARO



ROSE GOLD



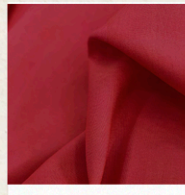
PINK



PINK FLOUR



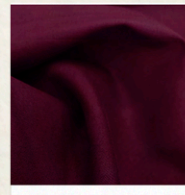
FRAMBOESA



MELANCIA



VERMELHO



VINHO



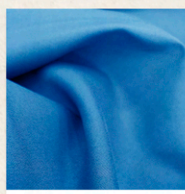
LILÁS



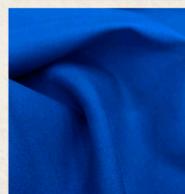
ROXO



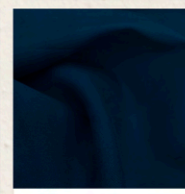
BABY BLUE



TURQUESA



ROYAL



MARINHO



PETRÓLEO



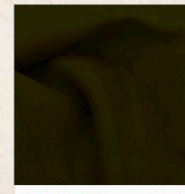
CHUMBO



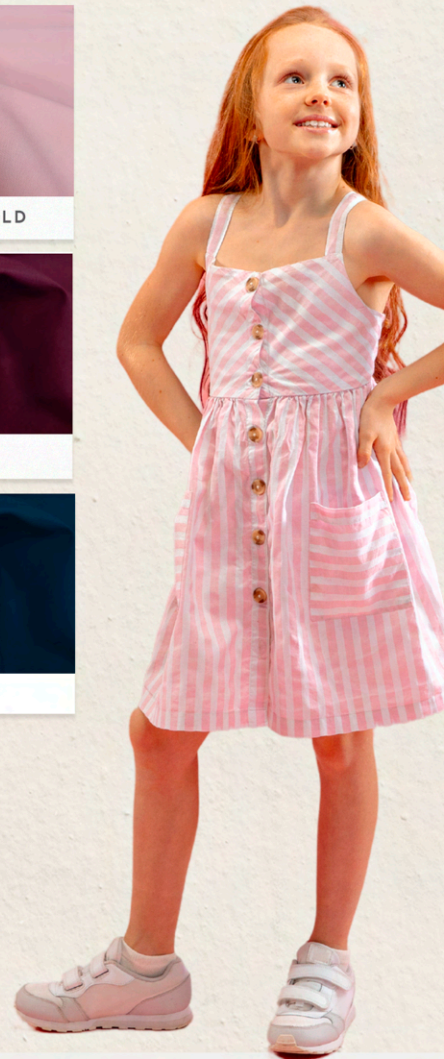
LIMÃO



BANDEIRA



MILITAR

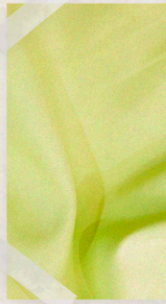




COR FENIX



COR AMÊNDOA



# new look



- LAVAGEM ATÉ 40° C PROCESSO SLAVE
- NÃO UTILIZAR ALVEJANTE OU CLAREADOR
- NÃO UTILIZAR SECADORA DE TAMBOR
- SECAGEM NA VERTICAL
- TEMPERATURA MÁXIMA 150° C
- NÃO LIMPAR A SECO

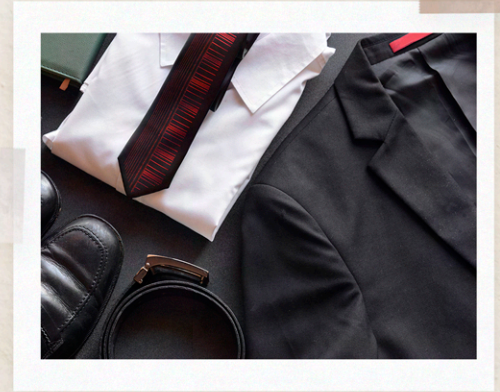
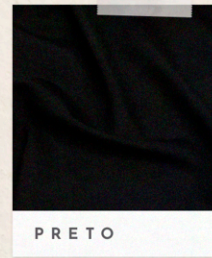


BRANCO	OFF WHITE	CREME BRULEE	AMÊNDOA
MANGA	CURRY	FENIX	RED
VINHO	PEACOCK	VIVA MAGENTA	KITSCH
MILITAR	FROST	SCUBA BLUE	ILLUSION
AZUL BIC	MARINHO	PRETO	



# oxford elegance

260 gramas



COMPOSIÇÃO: 100% POLIÉSTER



LAVAGEM ATÉ  
40° C  
PROCESSO  
NORMAL



NÃO UTILIZAR  
ALVEJANTE OU  
CLAREADOR



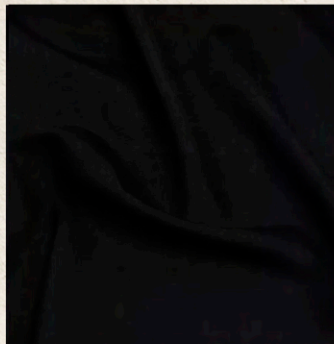
UTILIZAR  
TEMPERATURA  
MÍNIMA



TEMPERATURA  
MÁXIMA 150° C



NÃO LIMPAR A SECO



PRETO



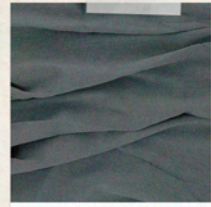
ROZAC



# popeline



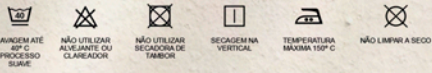
COR AZUL DENIM



COR CINZA



COMPOSIÇÃO: 90% POLIÉSTER & 10% ALGODÃO



BRANCO



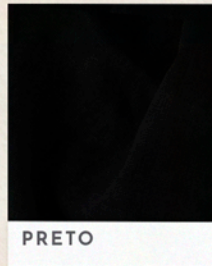
BEGE



CINZA CLARO



CINZA



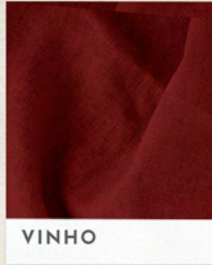
PRETO



NUDE



VERMELHO



VINHO



AZUL CLARO



AZUL DENIM



AZUL MOTORISTA



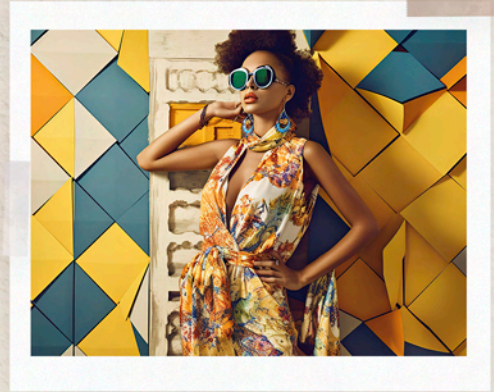
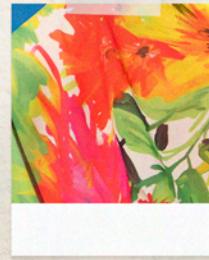
MARINHO



MALVA



# twill bliss



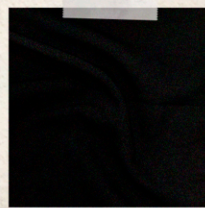
COMPOSIÇÃO: 100% POLIÉSTER



PRONTO P/  
ESTAMPAR



ROZAC



PRETO



CREME BRULEE



# two way

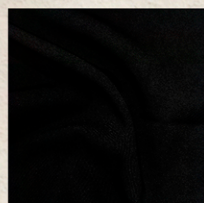


COMPOSIÇÃO: 97% POLIESTER & 3% ELASTANO

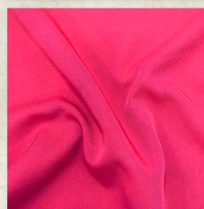
- LAVAGEM ATÉ 40° C. PROCESSO SUAVE
- NÃO UTILIZAR ALVEJANTE OU CLAREADOR
- NÃO UTILIZAR SECADORA DE TAMBOR
- SECAGEM NA VERTICAL
- TEMPERATURA MÁXIMA 150° C
- NÃO LIMPAR A SECO



CREME BRULEE



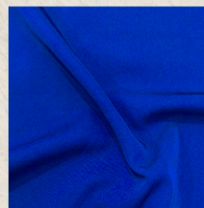
PRETO



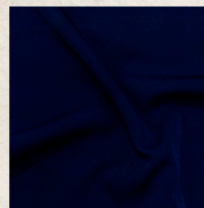
ROSA VIVO



ROSE



AZUL BIC



AZUL ECLIPSE



VERDE BOTÂNICO





**Escritório Central**

Rua Dom Pedro II, 404 - Centro

Americana / SP

CEP 13.465-040

fone: +55 (19) 2108.4600 | +55 (19) 2108.4612

contato@rozac.com.br

